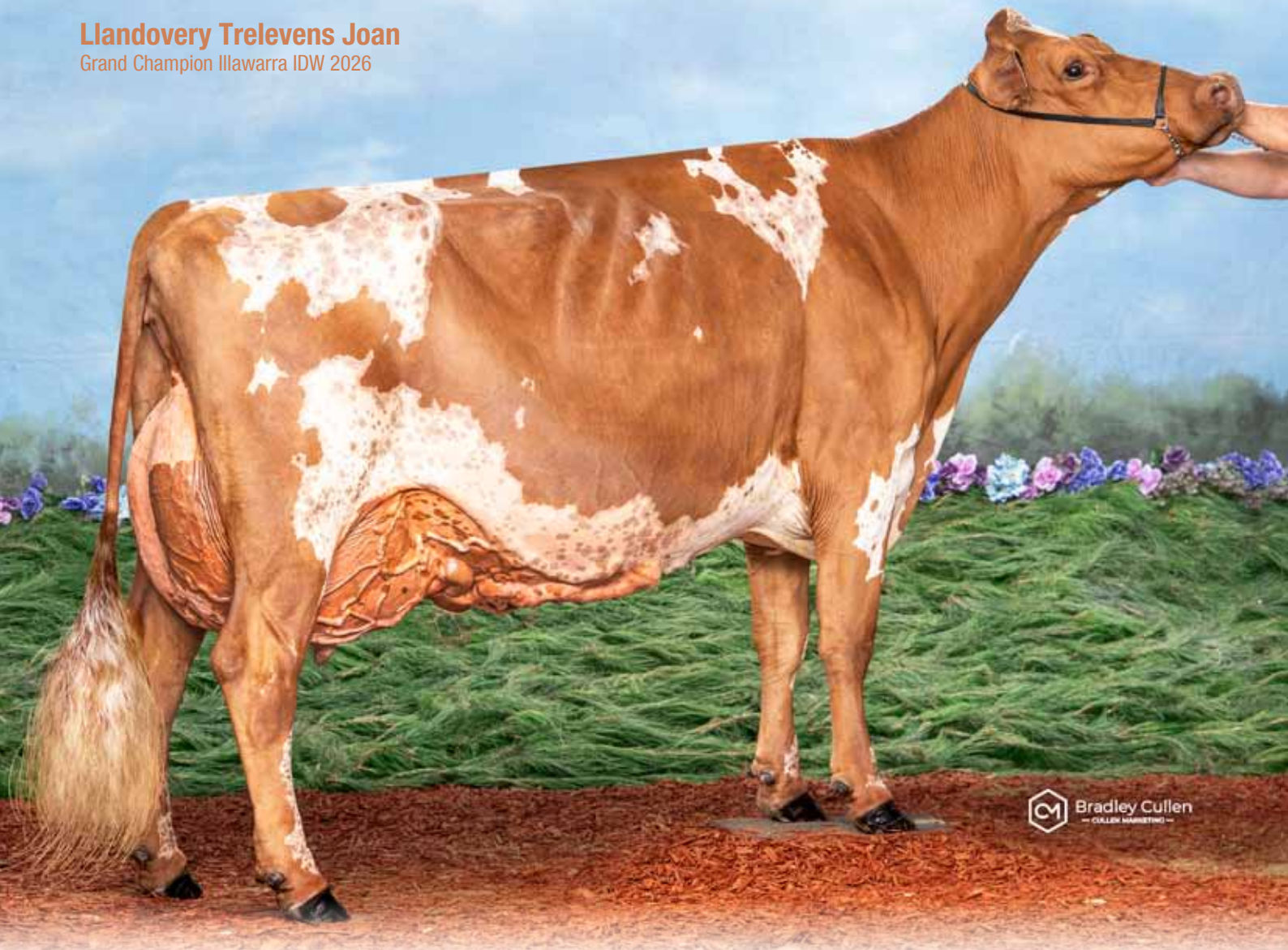


Northern Victoria *Illawarra* AUTUMN SELECTION SALE

Llandoverly Trelevens Joan
Grand Champion Illawarra IDW 2026



 **Bradley Cullen**
— CULLER MARKETING —

Thursday 19th March 2026
at 12 noon Shepparton RLX

Foreword

It is with great pleasure we bring you this catalogue of Autumn calving Illawarras from Northern Victorian Illawarra Breeders.

This select group present in tremendous form, are of outstanding type and are backed by leading, long established highly proven Cow Families.

To compliment these wonderful maternal lines they are all sired by Top Sires within the Breed and include both Illawarra and highly respected English Milking Shorthorn Sires.

As we study the pedigrees we find young cows selling with records to over 9,000 litres, 300 kgs protein and 315 kgs fat on first lactation.

Heifers sell from dams with production to 11,106 litres 368 kgs protein and 439 kgs fat.

I congratulate our vendors on this tremendous offering of 'High Production Illawarras' and know that those in search of quality Autumn calving heifers are sure to do well with their purchases.

We hope to see you in Shepparton, if not on Stocklive.



Brian Leslie OAM – Auctioneer

Northern Victoria Illawarra

AUTUMN SELECTION SALE

Thursday 19th March 2026
12 Noon
Shepparton RLX

29 Outstanding Autumn Calving Illawarras

Whilst all due care and attention has been paid to accuracy in the compilation of this catalogue, neither the Selling Agents or representative(s) thereof assume any responsibility whatsoever for the correctness, use or interpretation of the information on animals included this sale catalogue.

Live online bidding at Stocklive



DAIRY LIVESTOCK SERVICES

295 Benalla Road, Shepparton, VIC 3630

Phone: 03 9338 9259

email: rachel.lucich@dairylivestockservices.com.au

www.dairylivestockservices.com.au

Shaun Hamilton 0456 666 724
Ben Minogue 0438 145 926
Brian Leslie OAM 0418 365 934
Shane Flynn 0428 265 284

Sale Manager –
Michael Tuhan 0419 377 098

Lots 1-8 Account: Hayes Family

15 x Premier Breeder, 14 x Premier Exhibitor IDW

LOT
1

LLANDOVERY ECHO QUEENETTE 2930

Absolute milk cow!

ID: 2930 HB: xxxx DOB: 21/10/2022 CALVED: 5/2/26

Age	Milk	Ptn	Ptn	BF	BF	Days
2-0	9099	301	3.3	315	3.5	305

4th Dam: GLENHAVEN QUEENETTE 9

By Silverleigh Monarch.

5th Dam: BREMER VIEW NETTY, VG85

M	8138	269	3.3	371	4.6	305
---	------	-----	-----	-----	-----	-----

6th Dam: BREMER VIEW GE QUEENETTE-ET, VG86

7th Dam: BREMER VIEW QUEENETTE 21, VG

10-3	7123	255	3.6	376	3.5	305
------	------	-----	-----	-----	-----	-----

Champion Heifer in Milk Adelaide Royal 1980 etc.

8th Dam: BREMER VIEW QUEENETTE 11, VG89

8-9	7639	5.2	399			305
-----	------	-----	-----	--	--	-----

Champion Cow Adelaide Royal 1972. Res Champion Cow Adelaide Royal 1974. Dam of 4 Adelaide Champions.



LLANDOVERY BLUSH'S QUEENETTE 1183
2nd Dam

Sire: LLANDOVERY ECHO

ex Fabers Eva, Ex91

Dam:

LLANDOVERY STANDARDS QUEENETTE 1896

Age	Milk	Ptn	Ptn	BF	BF	Days
4-8	7237	228	3.2	304	4.2	269
5-8	7066	228	3.2	287	4.1	298

STORMAN ROYAL STANDARD

LLANDOVERY BLUSH'S QUEENETTE 1183, VG86

2-10	8581	265	3.1	340	4.0	305
------	------	-----	-----	-----	-----	-----

4-8	10454	338	3.2	413	4.0	305
-----	-------	-----	-----	-----	-----	-----

Intermediate Champion IDW 2016.

WALLUMLANDS BLUSH'S SAVARD

TRALEE VISCOUNT QUEENETTE 2ND

4-9	11395	384	3.4	377	3.3	305	121
-----	-------	-----	-----	-----	-----	-----	-----

7-3	10452	341	3.3	414	4.0	305	116
-----	-------	-----	-----	-----	-----	-----	-----

PURCHASER

\$

LOT
2

LLANDOVERY ECHO EMMA 3200

ID: 3200 HB: xxxx DOB: 22/8/23 Fresh

LLANDOVERY MC'S EMMA 873, Ex
Family Member

Sire:

LLANDOVERY ECHO

ex Fabers Eva, Ex91

Dam:

LLANDOVERY MITCH'S EMMA 995, VG87

Age	Milk	Ptn	Ptn	BF	BF	Days
2-8	6690	236	3.5	280	4.2	305
4-6	6444	218	3.4	272	4.2	279
5-5	6646	240	3.6	292	4.4	305
6-6	7130	229	3.2	284	4.0	305
8-11	5764	201	3.5	242	4.2	305
10-6	7331	238	3.2	256	3.5	305

Sister to: Llandoverly MC's Emma 873, Ex90. Won class Adelaide Royal etc.



MYRTLEHOLME MITCH

LLANDOVERY EMPIRES EMMA

2-1	7459	236	3.2	291	3.9	305
-----	------	-----	-----	-----	-----	-----

4-2	8064	250	3.1	351	4.4	305
-----	------	-----	-----	-----	-----	-----

5-2	11070	359	3.2	424	3.8	305
-----	-------	-----	-----	-----	-----	-----

6-11	9517	278	2.9	371	3.9	305
------	------	-----	-----	-----	-----	-----

9-1	11191	361	3.2	490	4.4	305
-----	-------	-----	-----	-----	-----	-----

LLANDOVERY JINNYS EMPIRE

LLANDOVERY JF EMMA 188

PURCHASER

\$

LOT
3

LLANDOVERY VERN'S FUSSY

Great young cow - complete package!

ID: 2908 HB: xxxx DOB: 3/9/22 CALVED: 2/2/26

Age Milk Ptn Ptn BF BF Days
2-2 7656 248 3.2 300 3.9 305
5th Dam: WALLUMLANDS FUSSY 21, VG87
6th Dam: WALLUMLANDS FUSSY 19, VG87
Dam of several VG dtrs.

7th Dam: WALLUMLANDS FUSSY 13, VG89
Res Champion Cow Shepparton National. 3 dtrs won Champions at IDW.
9th Dam: GLENHAVEN FUZZY 66

Sire:

LLANDOVERY VERN

(Bushmills Jazz ex Blush's Verbena 1452)

Dam:
LLANDOVERY JAZZ'S FUSSY 2488
Age Milk Ptn Ptn BF BF Days
2-1 8600 265 3.1 330 3.8 305

BUSHMILLS JAZZ (UK)
LLANDOVERY VISIONS FUSSY 1659
2-0 5968 182 3.0 224 3.8 278
5-11 8858 264 3.0 341 3.8 305

LLANDOVERY VERBS VISION

WALLUMLANDS FUSSY 34

PURCHASER

\$

LOT
4

LLANDOVERY STORMYJON LADY BARRINGTON 3236

Great long established family back to Willow Park

ID: 3236 HB: xxxx DOB: 23/10/2023 Fresh

4th Dam: WALLUMLANDS LADY BARRINGTON 4, GP83

by Silverleigh Monarch.

5th Dam: WILLOW PARK LADY BARRINGTON N39, VG87

by Backgard

6h Dam: WILLOW PARK LADY BARRINGTON G26 by Kittyhawk.



LLANDOVERY STORMYJON LADY BARRINGTON 3236 - Lot 4

Sire:

GORBRO STORMY JON

12/25 BPI+297, +927 Milk, OT+107.

Dam:

LLANDOVERY TRIBUTES LADY BARRINGTON 2635

OVENSDALE JENNYS TRIBUTE
LLANDOVERY ADVENTURES LADY BARRINGTON 2049
3-5 8558 295 3.5 387 4.5 305
4-5 8492 288 3.4 357 4.2 305
Great young cow.

LLANDOVERY ADVENTURE

WALLUMLANDS LADY BARRINGTON 12
By Lemon Grove Buttler.

PURCHASER

\$

LOT
5

LLANDOVERY VINNYS BLOSSOM 3347

Outstanding heifer - one of our very best!

ID: 3347 HB: xxxx DOB: 2/5/2024 Will be close

4th Dam: WALLUMLANDS BLOSSOM, GP83
Age Milk Ptn Ptn BF BF Days
7-8 9264 287 356 305
Super Cow.

6th Dam: MEADOWHAVEN BLOSSOM 304

1st Aged Dry Sydney Royal 1999. Bred down from Mid-lands Blossom 112. Champion Cow Sydney Royal 1970.



LLANDOVERY VINNYS BLOSSOM 3347
Lot 5

Sire:

LLANDOVERY VINNY

ex Pilots Verbena 746, Ex92-6E. Over 94000 litres lifetime.

Dam: LLANDOVERY UNSTOP BLOSSOM 2565
Age Milk Ptn Ptn BF BF Days
2-2 8911 292 3.3 374 4.2 305
Maternal sister to Llandoverly Hazza's Blossom. Jnr Champion IDW 2026.

RIVERDOWN UNSTOPABULL-RED
WALLUMLANDS BLOSSOM 7, VG86
2-5 7049 253 3.6 318 4.5 305
4-3 6582 209 3.7 282 4.3 266
Milked until 13yo.

LLANDOVERY JF JED

WALLUMLANDS BLOSSOM 3, GP
By Verbs Viscount.

PURCHASER

\$

LOT
6

LLANDOVERY JIATH LAUREL 3287

ID: 3287 HB: xxxx DOB: 8/2/24 Will be close
AI: to Trent-Way Ræ-Ban-Red TPI+2915 then P/W Hereford

Sire:

RIVERSLEIGH JIATH

ex Llandoverly JR Joan 984, Ex92-4E.



LLANDOVERY JETTA'S LAUREL 1779, VG88 - 2nd Dam

Dam:

LLANDOVERY TOPGUN LAUREL 2542

Age	Milk	Ptn	Ptn	BF	BF	Days
2-4	8073	271	3.4	365	4.5	274
3-3	9033	316	3.5	387	4.3	251

LLANDOVERY STORMS TOPGUN

LLANDOVERY JETTA'S LAUREL 1779, VG88

Age	Milk	Ptn	Ptn	BF	BF	Days
4-4	7625	271	3.6	363	4.8	305

LLANDOVERY JETTA

WALLUMLANDS LAUREL 6, GP83

By Blush's Savard. Bred down from Happy Valley Laurel 8.

PURCHASER

\$

LOT
7

LLANDOVERY JIATH EVA 3315

ID: 3315 HB: xxxx DOB: 23/3/24 Will be close at sale
AI: to Trent-Way Ræ-Ban-Red TPI+2915 then P/W Hereford

A most attractive
heifer!

4th Dam: LLANDOVERY FYNAKS EVA, VG85

5th Dam: WHITE GATES EVA 12, VG89

Bred down from Alfnol Eva 18.

Sire:

RIVERSLEIGH JIATH

ex Llandoverly JR Joan 984, Ex92-4E.



LLANDOVERY EMPIRES EVA 1570 - Family Member



LLANDOVERY JIATH EVA 3315 - Lot 7

Dam: LLANDOVERY ACES EVA 2356, GP83

Age	Milk	Ptn	Ptn	BF	BF	Days
2-8	7056	235	3.3	299	4.2	305
3-8	7889	285	3.6	339	4.3	305
4-8	6839	240	3.5	267	3.9	286
5-9	8745	295	3.4	362	4.1	301

Note the fertility here!

KUSZMAR STROKER ACE, USA

LLANDOVERY JUMBOS EVA 882, VG85

Age	Milk	Ptn	Ptn	BF	BF	Days
3-11	9898	335	3.4	362	3.7	305
5-10	8487	270	3.2	289	3.4	305
7-7	7035	218	3.1	287	4.1	305
11-0	9399	291	3.1	361	3.8	305

LLANDOVERY JUMBO

LLANDOVERY EMPIRES EVA 2, VG86

Age	Milk	Ptn	Ptn	BF	BF	Days
6-2	8936	312	3.5	442	5.0	305

PURCHASER

\$

LOT
8

LLANDOVERY VERN'S VENUS 3274

ID: 3274 HB: xxxx DOB: 10/1/24 Will be close at sale
AI: to Trent-Way Ræ-Ban-Red TPI+2915 +149 Milk then P/W Hereford

4th Dam: LLANDOVERY BLITZ VENUS
5th Dam: ALNWICK FUTURION VENUS, VG86
6th Dam: CRYSTAL PARK REGAL VENUS, VG88

7th Dam: CRYSTAL PARK SURVEYORS VENUS
By Sunny View Surveyor.
8th Dam: WILMINGTON VENUS 7
By Redpath to Naveligh Venus 5, VG87. Champion Cow
Toowoomba Royal etc.

Sire:
LLANDOVERY VERN
(Bushmills Jazz ex Blush's Verbena 1452)

Dam:

LLANDOVERY SANTINO VENUS 2536

Age	Milk	Ptn	Ptn	BF	BF	Days
2-2	6928	231	3.3	288	4.2	274
3-2	10620	351	3.3	384	3.6	305
4-3	7450	232	3.1	302	4.1	296

LLANDOVERY SANTINO

LLANDOVERY ABS VENUS 2170

APPLES ABSOLUTE-RED (HF)

LLANDOVERY ANTICIPATIONS VENUS 1613

PURCHASER

\$

LOT
9

RIVERSLEIGH SNOWY TULIP 37

ID: 2926 HB: 164260 DOB: 22/8/23 DUE: March Jersey 51.58% A/C: M Tuhan

4th Dam: WHITE GATES TULIP
Champion Cow Deakin Shire Centenary Show, Tongala.
2nd 5yo Shepparton National Show etc.

Sire:

RIVERSLEIGH COLLINS

(Jinnys Empire x Clover View Countess 113, VG86)

Age	Milk	Ptn	Ptn	BF	BF	Days
7-10	11313	328	2.9	347	3.1	305



RIVERSLEIGH TULIP 10, EX3E - 2nd Dam

Dam:

RIVERSLEIGH KITKAT TULIP 20, VG87

Age	Milk	Ptn	Ptn	BF	BF	Days
2-6	4954	158	3.2	220	4.4	282
3-5	6003	216	3.6	274	4.6	305
4-6	6525	212	3.2	289	4.4	290
5-5	5940	199	3.3	259	4.4	305
6-5	6901	222	3.2	279	4.0	299
7-5	6742	226	3.3	300	4.4	305

CRYSTAL PARK ULTIMATE BOY

12/25 OT 105, Milk +409.

RIVERSLEIGH TULIP 10, EX3E

Age	Milk	Ptn	Ptn	BF	BF	Days	F&PPI
2-0	6125	263	4.3	202	3.3	305	104
3-0	6203	282	4.5	221	3.6	305	95
4-11	9404	388	4.1	300	3.2	315	
6-3	10255	414	4.0	316	3.1	305	121
7-7	10852	451	4.2	336	3.1	305	132
8-11	11987	471	3.9	375	3.1	337	
10-0	6672	244	3.7	199	3.0	169	108
Life	74386	3092	4.2	2411	3.2	2678	116

Champion cow. Best Udder & Grand Champion
Melbourne Royal 2012 and 2013. 1st 2 yrs in milk All
Breeds Shepparton 2006. 1st 5yrs & Res Champion Cow
Shepparton 2009. Champion Cow Shepparton 2013. 1st
Aged Cow Shepparton 2014. 1st 5yrs Vic OFC 2009. 1st
Aged Cow & Res Grand Champion Vic OFC 2014.

GGI HELIX-RED

RIVERSLEIGH TULIP 2, VG87

Age	Milk	Ptn	Ptn	BF	BF	Days
6-0	6587	205	3.1	264	4.0	305
8-1	7883	243	3.0	300	3.8	305

Reserve Intermediate Champion Shepparton National
1995. Twice ribbon in milk IDW etc. By Wilmington
Kittyhawk.

PURCHASER

\$

LOT
10

RIVERSLEIGH TUCK BELLE 40

ID: 2935 HB: 164266 DOB: 1/9/23 DUE: March Jersey 57.84% A/C: M Tuhan

4th Dam: RIVERSLEIGH BELLE 4, VG85

Age Milk Ptn Ptn BF BF Days
8-1 8272 262 3.2 353 4.3 362
Dtrs Empire Belle 13, Ex. 2 x Vic State OFC Winner.
Trump Belle 8, VG88. Jnr Champion IDW 2006.

5th Dam: RIVERSLEIGH BELLE, VG88

By Venvale Pauli.

6th Dam: BREMER VIEW BELLE 65, VG85

7th Dam: BREMER VIEW BELLE 32, VG89

8th Dam: BREMER VIEW BELLE 27, VG85

Great brood cow, several VG dtrs.

Sire:

RIVERSLEIGH TUCK

Proven sire at Semex. Son of Riversleigh Tulip 10, Ex. See Lot 9.



RIVERSLEIGH CROWN BELLE 7 - 3rd Dam



RIVERSLEIGH BUSTLING BELLE 14, VG86 - Sister to 2nd Dam

Dam:

RIVERSLEIGH JETSON BELLE 29, VG86

Age	Milk	Ptn	Ptn	BF	BF	Days
2-1	5771	172	3.0	237	4.1	305
3-1	6249	198	3.2	263	4.2	305
4-2	6390	198	3.1	252	3.9	305
5-2	7772	246	3.2	314	4.0	305

8 gens VG.

STORMAN JET-SON

12/25 OT+105. ex Buttler Jean, Ex91-5E. Champion Cow Sydney Royal etc.

RIVERSLEIGH JED BELLE 16, VG88

Age	Milk	Ptn	Ptn	BF	BF	Days
2-5	6370	201	3.2	276	4.3	305
3-10	6903	218	3.2	279	4.0	305
4-10	7378	233	3.2	267	3.6	305
6-0	6737	211	3.1	258	3.8	305
7-5	6181	189	3.1	256	4.1	305

Sister R Bustling Belle 14, VG86. 1st 4yo & Reserve
Champion Cow Melbourne Royal 2013.

LLANDOVERY JF JED

RIVERSLEIGH CROWN BELLE 7, VG87

Age	Milk	Ptn	Ptn	BF	BF	Days
1-11	7342	234	3.2	300	4.3	
3-8	8865	300	3.4	381	4.3	
5-0	6859	220	3.2	302	4.4	
6-1	6667	211	3.2	268	4.0	

4th 5yo IDW 2008. Hon Men Champion Cow Shepparton 2007 etc.

PURCHASER

\$

Lots 11-17 Account: D&N Collins, Ballendella

LOT
11

ERINDALE RYSHELLE DIANA 18TH

ID: 4929 HB: 165439 DOB: 13/4/2024 DUE: Jersey from 28/4/26 78.14%

4th Dam: ERINDALE RYSHELLE DIANA, VG86

by Llandoverly Crowns Vigorous. Next dam by Glenbrook Phantom.

Sire: OXTON FINNAN (UK) - British sire, son of Oxtan Foggathorpe 710, Ex90, ex Oxtan Foggathorpe 610, Ex93.

Dam:

ERINDALE RYSHELLE DIANA 9TH, VG85

Age	Milk	Ptn	Ptn	BF	BF	Days	PI
23m	6107	179	2.9	238	3.9	305	98
37m	7442	234	3.1	318	4.3	289	115
48m	8461	279	3.3	331	3.9	305	100

RIVERSLEIGH TUCK

ERINDALE RYSHELLE DIANA 4TH, GP

Age	Milk	Ptn	Ptn	BF	BF	Days	PI
25m	5701	180	3.2	227	4.0	281	121
36m	5768	189	3.3	228	4.0	305	108
48m	7087	223	3.1	273	3.9	305	103
60m	8084	244	3.0	320	4.0	305	
73m	7264	220	3.0	277	3.8	297	
85m	6746	212	3.1	259	3.8	298	83

OVENS DALE SCARLETS MARCEL

ERINDALE RYSHELLE DIANA 2ND, GP83

Age	Milk	Ptn	Ptn	BF	BF	Days	PI
23m	6321	211	3.3	247	3.9	305	121
41m	7262	237	3.3	289	4.0	297	113
52m	7887	256	3.2	290	3.7	305	116
65m	6915	220	3.2	245	3.5	295	106
76m	9038	299	3.3	320	3.5	305	109
90m	7914	232	2.9	280	3.5	278	95

by Glenbrook Star Trump.

PURCHASER

\$

LOT
12

ERINDALE CHLOE DIANA 40TH

A2A2

ID: 4925 HB: 164997 DOB: 7/4/2024
DUE: 23/3/26 to Krauses Tanbark Inspired-PP, Ex (USA) 68.53%

Sire: SPRINGVALE THELMAS STRIKE-POLL – 12/25 gBPI+106, ASI+94. +635 Milk, OT 105.

Dam:

ERINDALE CHLOES DIANA 29TH

Age	Milk	Ptn	Ptn	BF	BF	Days	F&PPI
23m	7644	237	3.1	334	4.4	305	112

OVENSDALE JENNY'S TRIBUTE

ERINDALE CHLOES DIANA 11TH, VG

Age	Milk	Ptn	Ptn	BF	BF	Days	F&PPI
23m	6324	196	3.1	289	4.6	304	106
35m	6652	225	3.4	299	4.5	305	104
55m	8890	286	3.2	417	4.7	303	117
67m	7632	261	3.4	366	4.8	300	110
79m	7428	243	3.3	339	4.6	305	111
97m	6679	208	3.1	295	4.4	245	

ERINDALE SILVER MAX
UNREGISTERED ILLAWARRA COW

Age	Milk	Ptn	Ptn	BF	BF	Days	F&PPI
25m	5328	188	3.5	260	4.9	305	113
41m	6690	234	3.5	322	4.8	303	117
54m	5707	201	3.5	268	4.7	305	101
73m	7791	281	3.6	406	5.2	305	111
85m	6853	258	3.8	329	4.8	303	106
97m	6247	224	3.6	288	4.6	278	

PURCHASER

\$

LOT
13

ERINDALE NADINE DIANA 89TH (P)

A2A2

ID: 4915 HB: 164995 DOB: 4/4/2024 DUE: 23/3/26 to Inspired-PP 68.53%

Sire: SPRINGVALE THELMAS STRIKE-POLL – 12/25 gBPI+106, ASI+94. +635 Milk, OT 105.

4th Dam: DIANA 6

By Venvale Plucka

Age	Milk	Ptn	Ptn	BF	BF	Days	F&PPI
70m	8255	282	3.4	379	4.6	305	130

Lifetime ave PI 120.

5th Dam: By Glenbrook Phantom.

Dam:

ERINDALE NADINE DIANA 72ND

Age	Milk	Ptn	Ptn	BF	BF	Days	F&PPI
	6524	226	3.5	352	5.4	305	111

OVENSDALE JENNY'S TRIBUTE

ERINDALE NADINE DIANA 6TH, VG87

Age	Milk	Ptn	Ptn	BF	BF	Days	F&PPI
23m	5543	187	3.4	284	5.1	305	115
41m	6963	241	3.5	365	5.2	305	122
59m	6323	228	3.6	331	5.2	305	118
71m	7507	256	3.4	374	5.0	305	118

GLENBROOK STAR TRUMP

ERINDALE DIANA 9TH

By Myrtleholme Navigator.

Age	Milk	Ptn	Ptn	BF	BF	Days	F&PPI
23m	5057	180	3.6	253	5.0	305	111
36m	7888	263	3.3	372	4.7	305	130
50m	7856	259	3.3	377	4.8	305	123

PURCHASER

\$

LOT
14

ERINDALE MIKHAELA BUTTERCUP 32ND (P)

A2A2

ID: 4923 HB: 164490 DOB: 4/4/2024 DUE: from 4/5/26 to Jersey 73.78%

Sire: OVENSDALE JENNY'S TRIBUTE

12/25 gBPI+40, ASI+50, +0.31% fat. OT 102.

4th Dam: MIKHAELA BUTTERCUP

Age	Milk	Ptn	Ptn	BF	BF	Days
72m	9025	305	3.4	370	4.1	305

Lifetime ave PI 117.

Dam:

ERINDALE MIKHAELA BUTTERCUP (P) 22ND

Age	Milk	Ptn	Ptn	BF	BF	Days
24m	6698	196	2.9	235	3.5	305

CIRCLE B A LUCKY STRIKE-PP

ERINDALE MIKHAELA BUTTERCUP 17TH, GP84

Age	Milk	Ptn	Ptn	BF	BF	Days
23m	5087	156	3.1	225	4.4	305
35m	5081	157	3.1	224	4.4	301
49m	7443	226	3.0	318	4.3	284
61m	6161	179	2.9	265	4.3	207

RIVERSLEIGH TUCK

BUTTERCUP 5

Age	Milk	Ptn	Ptn	BF	BF	Days
84m	9166	276	3.0	330	3.6	285

7 lact ave PI 111.

PURCHASER

\$

LOT
15

ERINDALE PRINCESS 13TH

A2A2

ID: 4918 HB: 164489 DOB: 7/4/2024 DUE: 23/3/26 to Glenbrook Beauty's Reward 78.07%

4th Dam: LEMON GROVE PRINCESS 791, GP83

Age	Milk	Ptn	Ptn	BF	BF	Days
80m	7567	239	3.2	335	4.4	305

By Kakadu.

5th Dam: LEMON GROVE PRINCESS 749, VG87

Age	Milk	Ptn	Ptn	BF	BF	Days
5-2	12783	422	3.3	467	3.7	354

1st 2yo & Best Udder of Class IDW 2009. By Faber-Red.

6th Dam: LEMON GROVE PRINCESS 725, VG

7th Dam: LEMON GROVE PRINCESS 701, VG

Bred down from Princess 327. Champion Cow Melbourne Royal 1973 etc.

Sire:

OVENSDALE JENNY'S TRIBUTE

12/25 gBPI+40, ASI+50, +0.31% fat. OT 102.

Dam:

ERINDALE PRINCESS (P) 7TH

Age	Milk	Ptn	Ptn	BF	BF	Days
24m	6292	185	2.9	255	4.1	305
37m	5747	169	2.9	242	4.2	219

CIRCLE B A LUCKY STRIKE-PP

ERINDALE PRINCESS 4TH, VG

Age	Milk	Ptn	Ptn	BF	BF	Days
23m	4967	150	3.0	229	4.6	305
40m	7036	229	3.3	345	4.9	305
54m	7358	226	3.1	334	4.5	278

RIVERSLEIGH TUCK

ERINDALE SILVERS PRINCESS, GP

PURCHASER

\$

LOT
16

ERINDALE VIOLET 6TH

A2A2

ID: 4913 HB: 164487 DOB: 1/4/2024 DUE: from 14/4/26 to Jersey 81.63%

4th Dam: LEMON GROVE VIOLET 8, VG88

Age	Milk	Ptn	Ptn	BF	BF	Days
4-0	9010	303	3.4	394	4.4	305

By Kakadu.

5th Dam: KURRAROO VIOLET 202

Sire: OVENSDALE JENNYS TRIBUTE - 12/25 gBPI+40, ASI+50, +0.31% fat. OT 102.

Dam:

ERINDALE VIOLET (P) 2ND

Age	Milk	Ptn	Ptn	BF	BF	Days	F&PPI
2-0	7504	234	3.1	298	4.0	305	106

CIRCLE B A LUCKY STRIKE-PP

ERINDALE VIOLET, GP84

Age	Milk	Ptn	Ptn	BF	BF	Days
21m	4566	157	3.4	228	5.0	305
35m	5485	193	3.5	301	5.5	305
47m	7479	264	3.5	384	5.1	305

OCEANBRAE FOSTER

ERINDALE STARS VIOLET, VG88

Age	Milk	Ptn	Ptn	BF	BF	Days	F&PPI
23m	6242	196	3.1	305	4.9	303	106
35m	6240	219	3.5	341	5.5	305	104
49m	8669	311	3.6	435	5.0	305	125
72m	8388	283	3.4	480	5.7	305	126
88m	9065	325	3.6	464	5.1	305	127

PURCHASER

\$

LOT
17

ERINDALE TRIS DAISY 8TH

A2A2

ID: 4928 HB: 165438 DOB: 12/4/2024 DUE: 23/3/26 to Glenbrook Beauty's Reward 74.94%

Sire: OVENSDALE JENNYS TRIBUTE - 12/25 gBPI+40, ASI+50, +0.31% fat. OT 102.

Dam:

ERINDALE STARS DAISY 5TH, VG86

Age	Milk	Ptn	Ptn	BF	BF	Days	F&PPI
23m	5617	185	3.3	255	4.5	305	100
37m	6700	236	3.5	309	4.6	266	113
48m	7474	272	3.6	339	4.5	305	110
60m	7075	245	3.5	342	4.8	305	113
80m	9100	320	3.5	420	4.6	740	314

ERINDALE STARS REBEL

ERINDALE MARS DAISY, GP84

Age	Milk	Ptn	Ptn	BF	BF	Days	F&PPI
23m	6998	228	3.3	288	4.1	305	120
35m	6878	223	3.2	298	4.3	300	
47m	7247	236	3.3	316	4.4	305	
59m	8513	282	3.3	361	4.2	305	111
73m	8492	266	3.1	358	4.2	280	115
84m	6735	221	3.3	297	4.4	305	104
97m	9309	292	3.1	358	3.8	305	116
108m	8560	267	3.1	297	3.5	305	

SILVERLEIGH MAXIMA

ERINDALE ZUMBA DAISY, GP

By Jumba (USA)

Age	Milk	Ptn	Ptn	BF	BF	Days	F&PPI
41m	7112	228	3.2	282	4.0	305	113

PURCHASER

\$

Lots 18-29 Account: Raymond & Sarah Parker. All will be freshly calved or close to Glencliffe Jumanji.

LOT
18

GLENCLIFFE BEAUTY 1274

ID: 1274 HB: 163545 DOB: 13/8/23 63.39%

ABV(g) 12/25: BPI+186, ASI+164.

5th Dam: GLENCLIFFE BEAUTY 514, VG87

By Verbs Viscount.

6th Dam: GLENCLIFFE BEAUTY 332, VG86

Dam of Beauty 471, Ex90-2E. Res Intermediate Champion IDW 2012.

7th Dam: GLENCLIFFE BEAUTY 6, VG85

8th Dam: GLENCLIFFE BEAUTY, VG85

3 x Winner Brisbane Royal.

9th Dam: IRONWOOD PARK SCARLET BEAUTY, VG86

10th Dam: TABBAGONG BEAUTY 406

GLENCLIFFE BEAUTY 471, Ex90
Family Member

Sire:

OVENSDALE JENNY'S TRIBUTE

12/25 gBPI+40, ASI+50, +0.31% fat. OT 102.



Dam: GLENCLIFFE BEAUTY 1157

Age	Milk	Ptn	Ptn	BF	BF	Days
2-0	6334	230	3.6	280	4.4	305
3-1	6862	254	3.7	307	4.5	281

BEAULANDS MARNUS - BPI+155, OT+104.

GLENCLIFFE BEAUTY 1072

GLENBROOK QUEENS PRINCE

GLENCLIFFE BEAUTY 878

By Silverleigh Maxima.

PURCHASER

\$

LOT
19

GLENCLIFFE SOPHIE 1263

ID: 1263 HB: 163536 DOB: 7/8/23 60.91%

Sire: OVENSDALE JENNYS TRIBUTE – 12/25 gBPI+40, ASI+50, +0.31% fat. OT 102.

Dam:

BEAULANDS MARNUS
BPI+155, OT+104.

GLENCLIFFE SOPHIE 1174

GLENCLIFFE SOPHIE 972

GLENCLIFFE BOIANGLES

Age	Milk	Ptn	Ptn	BF	BF	Days
1-11	8206	252	3.1	256	3.1	305

Age	Milk	Ptn	Ptn	BF	BF	Days
2-4	7448	230	3.1	259	3.5	305
3-6	10850	320	2.9	374	3.4	305

GLENCLIFFE SOPHIE 851

PURCHASER

\$

LOT
20

GLENCLIFFE SUZETTE 1266

ID: 1266 HB: 163539 DOB: 9/8/23 75.51%

Sire: OXTON FEVER (UK) EX90 – PLI+63. ex Oxtou Foggathorpe 610, Ex 93.

Dam:

RIVERSLEIGH TALLIS
Vprince x Tulip 10, Ex.

GLENCLIFFE SUZETTE 1023

GLENCLIFFE SUZETTE 627

OVENSDALE SCARLETS MARCEL

Age	Milk	Ptn	Ptn	BF	BF	Days
2-6	8032	275	3.4	283	3.5	305
3-6	8571	283	3.3	322	3.8	305
4-11	9849	317	3.2	347	3.5	305

Age	Milk	Ptn	Ptn	BF	BF	Days
3-6	7733	234	3.0	265	3.4	305
4-7	7614	251	3.3	259	3.4	274
5-7	10503	350	3.3	307	2.9	305
7-1	10833	358	3.3	345	3.2	305
8-1	7609	264	3.5	252	3.3	269

GLENCLIFFE SUZETTE 422, VG87

PURCHASER

\$

LOT
21

GLENCLIFFE TOPSEY 1286

ID: 1286 HB: 163555 DOB: 13/9/23 73.28%

4th Dam: GLENCLIFFE TOPSEY 504, VG87
5th Dam: GLEN MEADOW TOPSEY 29

Sire: OXTON FEVER (UK) EX90 – PLI+63. ex Oxtou Foggathorpe 610, Ex 93.

Dam:

RIVERSLEIGH TALLIS
Vprince x Tulip 10, Ex.

GLENCLIFFE TOPSEY 990, VG87

GLENCLIFFE TOPSEY 807

RIVERSLEIGH BIRCHALL

Age	Milk	Ptn	Ptn	BF	BF	Days
2-5	7883	275	3.5	309	3.9	305
3-11	9577	330	3.4	337	3.5	305
5-5	10617	346	3.3	376	3.5	305

Age	Milk	Ptn	Ptn	BF	BF	Days
1-11	6767	244	3.6	216	3.2	305
3-0	7781	288	3.7	302	3.9	288
4-0	7139	260	3.6	276	3.9	305
5-4	8440	294	3.5	329	3.9	305

GLENCLIFFE TOPSEY 702
By Bon Jovi.

PURCHASER

\$

LOT
22

GLENCLIFFE TOPSEY 1302

ID: 1302 HB: 165485 DOB: 23/3/24 48.05%

4th Dam: GLENCLIFFE TOPSEY 504, VG87
5th Dam: GLEN MEADOW TOPSEY 29

Sire: LLANDOVERY QUEENS EMPEROR – BPI+372. OT+107, Mam+106.

Dam:

LLANDOVERY SUPERCOT

GLENCLIFFE TOPSEY 789, VG89, SILVER STP

R FACET

GLENCLIFFE TOPSEY 1186

Age	Milk	Ptn	Ptn	BF	BF	Days
2-0	7749	269	3.5	308	4.0	305
3-0	6764	258	3.8	264	3.9	282

Age	Milk	Ptn	Ptn	BF	BF	Days
4-1	7604	266	3.5	319	4.2	289
5-0	9070	328	3.6	364	4.0	305
6-1	10033	358	3.6	417	4.2	290
7-0	10942	379	3.5	426	3.9	305
8-5	10099	341	3.4	381	3.8	305
9-5	9100	307	3.4	371	4.1	305

GLENCLIFFE TOPSEY 637, GP83
By Beaulands Hilly.

PURCHASER

\$

LOT
23

GLENCLIFFE HONEYMOON 1289

ID: 1289 HB: 165481 DOB: 5/3/24 63.86%

4th Dam: SPRINGVALE HONEYMOON 5, GP84
 5th Dam: GLEN VALE PARK HONEYMOON 18
 By JTT.
 6th Dam: GLEN VALE PARK HONEYMOON, VG85
 By Wilmington Kittys Reflect.
 7th Dam: PARKVIEW HONEYMOON 6, EX
 Age Milk Ptn Ptn BF BF Days
 7-8 8248 257 3.1 458 5.5 300
 Twice Supreme Champion Dairy Cow Sydney Royal.
 Champion Cow Adelaide & Melbourne Royals etc.



PARKVIEW HONEYMOON 6, EX
 Foundation

Sire:

COTTONHALL SOLOMON (UK)

PLI+206. ex Cottonhall Pingerly Sonnschein, Ex95.

Dam: GLENCLIFFE HONEYMOON 1130

Age	Milk	Ptn	Ptn	BF	BF	Days
2-0	6946	206	3.0	171	2.5	305

Same family as Springvale Honeymoon 33, Ex91-4E.
 139619 litres lifetime. 2nd highest lifetime Illawarra cow
 of all time.

LLANDOVERY JETS VIGIL

GLENCLIFFE HONEYMOON 908

2-0	5797	201	3.5	246	4.2	305
3-0	6912	247	3.6	294	4.3	289
4-0	8704	301	3.5	369	4.2	305
5-0	8063	262	3.2	347	4.3	305
6-0	6595	235	3.6	271	4.1	305
7-0	8622	275	3.2	359	4.2	305

OVENSDALE PIXIES TREBLE

SPRINGVALE HONEYMOON 44

By Clarefield Mocha.

PURCHASER

\$

LOT
24

GLENCLIFFE JOYCE 1296

ID: 1296 HB: 165467 DOB: 15/3/24 63.01%

4th Dam: GLENCLIFFE JOYCE 579, GP84
 By Llandoverly Stellas Snapper.

5th Dam: GLENCLIFFE JOYCE 85, EX91
 Same family as GLENCLIFFE JOYCE 468, Ex91-3E
 6-7 11733 378 3.2 491 4.2 305
 Intermediate Champion IDW 2012. Real Australian 4yo
 etc. Dam of Jedi.

Sire:

COTTONHALL SOLOMON (UK)

PLI+206. ex Cottonhall Pengerly Sonnschein, Ex95.



GLENCLIFFE JOYCE 845, EX91-2E - 2nd Dam



GLENCLIFFE JOYCE 468, EX91 - Family Member

Dam: GLENCLIFFE JOYCE 1050, GP83

Age	Milk	Ptn	Ptn	BF	BF	Days
2-6	7642	250	3.3	310	4.0	305
3-6	9891	330	3.3	353	3.6	305
5-0	9540	318	3.3	371	3.9	305

Joyce family been at Glencliffe since 1946. Traces back
 to 1914.

ST ANDREWS ALLIANCE - BPI+116. OT+110. Mam +109.

GLENCLIFFE JOYCE 845, EX91-2E, STP

Age	Milk	Ptn	Ptn	BF	BF	Days
3-0	8615	282	3.3	339	3.9	305
4-6	8502	284	3.3	312	3.7	305
5-7	9634	299	3.1	364	3.8	272
6-6	9038	303	3.4	344	3.8	278
7-5	9170	308	3.4	341	3.7	305
9-1	7500	242	3.2	276	3.7	276

RIVERSLEIGH TALLIS

GLENCLIFFE JOYCE 750, VG88, STP

By VR Cigar.

PURCHASER

\$

LOT
25

GLENCLIFFE PRINCESS 1292

ID: 1292 HB: 165463 DOB: 14/3/24 63.28%

4th Dam: GLENCLIFFE PRINCESS 312, VG85
Bred down from Lemon Grove Princess family.

GLENCLIFFE PRINCESS 404, VG89 - 3rd Dam

Sire:

COTTONHALL SOLOMON (UK)

PLI+206. ex Cottonhall Pengerly Sonnschein, Ex95.

Dam:

GLENCLIFFE PRINCESS 1088

Age	Milk	Ptn	Ptn	BF	BF	Days
1-11	6108	201	3.3	225	3.7	305
3-6	8771	283	3.2	260	3.0	305
4-6	9078	285	3.1	294	3.2	305



ST ANDREWS ALLIANCE - BPI+116. OT+110. Mam +109.

GLENCLIFFE PRINCESS 801

Age	Milk	Ptn	Ptn	BF	BF	Days
2-5	9136	307	3.4	296	3.2	305
4-6	10275	340	3.2	386	3.8	305

TREETON PINGERLY

GLENCLIFFE PRINCESS 404, VG89, STP

Age	Milk	Ptn	Ptn	BF	BF	Days
M	11073	385	3.5	403	3.6	305

Twice Reserve Champion Cow Shepparton National.

PURCHASER

\$

LOT
26

GLENCLIFFE PLUM 1307

ID: 1307 HB: 165482 DOB: 28/3/24 45.90%

4th Dam: WALLUMLANDS PLUM 5

Junior Champion Kyabram etc. By Faber-Red.

5th Dam: WALLUMLANDS PLUM, VG87

6th Dam: CRAWFORD TAYLOR PLUM, VG89

7th Dam: GLENHAVEN PLUM, VG86

8th Dam: SPRINGVALE PLUM 3, VG85

9th Dam: WILMINGTON PLUM 24, VG87

10th Dam: WILMINGTON PLUM 8

11th Dam: WILMINGTON PLUM, EX

Supreme Champion Dairy Cow Brisbane Royal 1975 &76.

12th Dam: NAVILLOWEEN PLUM 22, VG

Supreme Champion Dairy Cow Toowoomba Royal etc.

Sire:

LLANDOVERY QUEENS EMPEROR

12/25: BPI+372. OT+107, Mam+106.



WILMINGTON PLUM, EX - Foundation

Dam:

GLENCLIFFE PLUM 1190

Age	Milk	Ptn	Ptn	BF	BF	Days
2-0	7177	242	3.4	257	3.6	305

LLANDOVERY STORMS TOPGUN

GLENCLIFFE PLUM 804

Age	Milk	Ptn	Ptn	BF	BF	Days
2-0	5309	182	3.4	188	3.5	285
2-11	6756	238	3.5	260	3.8	305
3-11	6112	208	3.4	258	4.2	305
5-0	6948	240	3.5	307	4.4	282
5-11	6399	216	3.4	257	4.0	279
6-11	5060	170	3.4	185	3.7	244

RIVERSLEIGH BIRCHALL

GLENCLIFFE PLUM 713

PURCHASER

\$

LOT
27

GLENCLIFFE KAIYA 1299

ID: 1299 HB: 165491 DOB: 19/3/24 49.98%

ABV(g) BPI+269. ASI+247.

Sire: LLANDOVERY QUEENS EMPEROR – 12/25: BPI+372. OT+107, Mam+106.

Dam:

BEAULANDS MARNUS
BPI+155. OT+104.

GLENCLIFFE KAIYA 1183

GLENCLIFFE KAIYA 991

GLENCLIFFE JP JEDI

Age	Milk	Ptn	Ptn	BF	BF	Days
2-0	7090	249	3.5	283	4.0	305

Age	Milk	Ptn	Ptn	BF	BF	Days
2-6	7265	234	3.2	290	4.0	305
3-10	7658	254	3.3	333	4.3	305

GLENCLIFFE KAIYA 799

By Pingerly. Back to Glen Meadow Kylie 9.

PURCHASER

\$

LOT
28

GLENCLIFFE JINNY 1291-P

ID: 1291 HB: 165493 DOB: 6/3/24 53.2%

GLENCLIFFE JINNY 1008 - Dam

Sire:

WAIKATO FARM PRIMESTAD-P

12/25 BPI+129. OT+104, Mam+104.



Dam:

EAGLE PARK DWAYNE – BPI+450.

GLENCLIFFE JINNY 892, VG89

RIVERSLEIGH TALLIS

GLENCLIFFE JINNY 1008, GP84

Age	Milk	Ptn	Ptn	BF	BF	Days
2-11	7289	258	3.5	332	4.6	305
4-0	10106	352	3.5	416	4.1	305
5-7	11106	368	3.3	439	4.0	305

Age	Milk	Ptn	Ptn	BF	BF	Days
1-11	5923	201	3.4	215	3.6	305
2-10	7046	248	3.5	264	3.7	294
3-11	8537	295	3.5	317	3.7	305
5-6	9836	330	3.4	368	3.7	305
6-7	10360	356	3.4	359	3.5	305
8-0	9736	310	3.2	345	3.5	305

WALLUMLANDS JINNY 4

Bred down from White Gates Jinny 11, VG88 back to White Gates Jinny. Twice Champion Cow Brisbane Royal then from St Ives Jinny, VG89, Bellringer Jamberoo Spring Fair.

PURCHASER

\$

LOT
29

GLENCLIFFE LOUISE 1305

ID: 1305 HB: 165469 DOB: 25/3/24 51.97%

Dam 4.1% Ptn
5.3% Fat

BPI+148. ASI+130.

Sire: RIVERSLEIGH JIATH – ex Llandoverly JR Joan 984, Ex92-4E.

Dam:

EAGLE PARK DWAYNE
BPI+450.

GLENCLIFFE LOUISE 1009

GLENCLIFFE LOUISE 889, VG88

CREIGHTON PARK ELMO 2108

Age	Milk	Ptn	Ptn	BF	BF	Days
2-7	6452	256	4.0	325	5.0	305
3-7	7243	294	4.1	377	5.2	301
4-7	7744	302	3.9	361	4.7	305
5-7	7936	310	3.9	420	5.3	305

Age	Milk	Ptn	Ptn	BF	BF	Days
3-0	6187	222	3.6	256	4.1	305
4-1	7394	269	3.6	340	4.6	305
5-0	8966	304	3.4	344	3.8	294
6-0	8749	310	3.5	333	3.8	305
7-0	8424	295	3.5	320	3.8	305
8-1	9817	329	3.4	351	3.6	305

SPRINGVALE LOUISE 69

PURCHASER

\$



After Illawarra Judging
at IDW 2026

Thank you

for your company today.
Please travel safe.

Llandoverly Trelevens Joan
Grand Champion Illawarra IDW 2026

